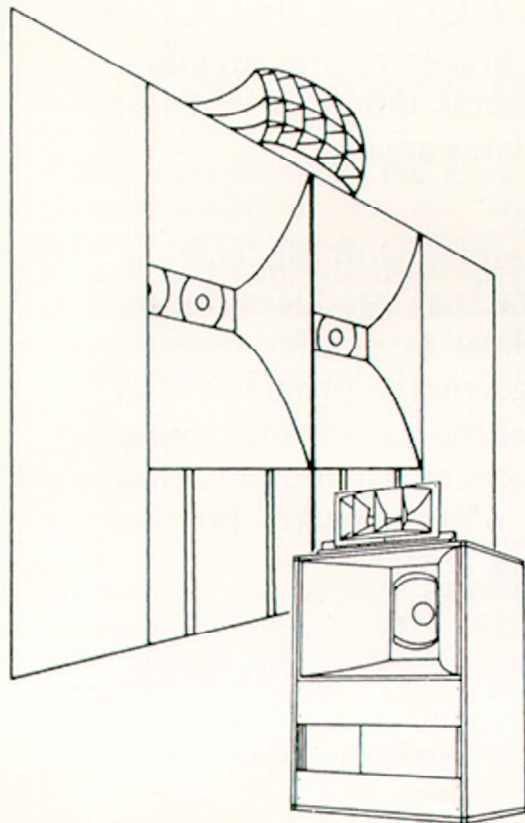


# ALTEC "The Voice of the Theatre"

speaker systems for  
Theatres • Night Clubs  
Auditoriums • Arenas  
Stadiums • Churches  
Stereophonic • Monophonic



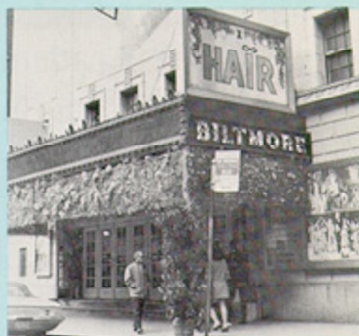
*Cinerama Theatre, Hollywood, California*



*Egyptian Theatre, Hollywood, California*



*Ambassador Theatre, New York City*



*Biltmore Theatre, New York City*



*Fox Cinemaland, Anaheim, California*



*Billy Rose Theatre, New York City*



*Shubert Theatre, New York City*



*Pantages Theatre, Hollywood, California*



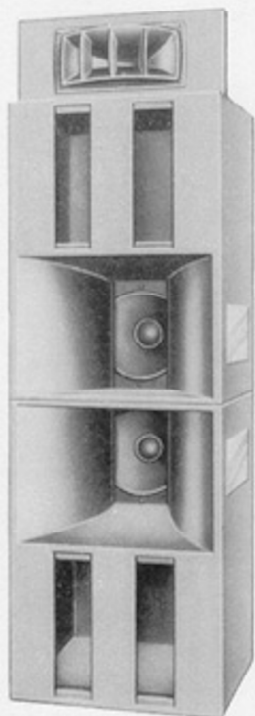
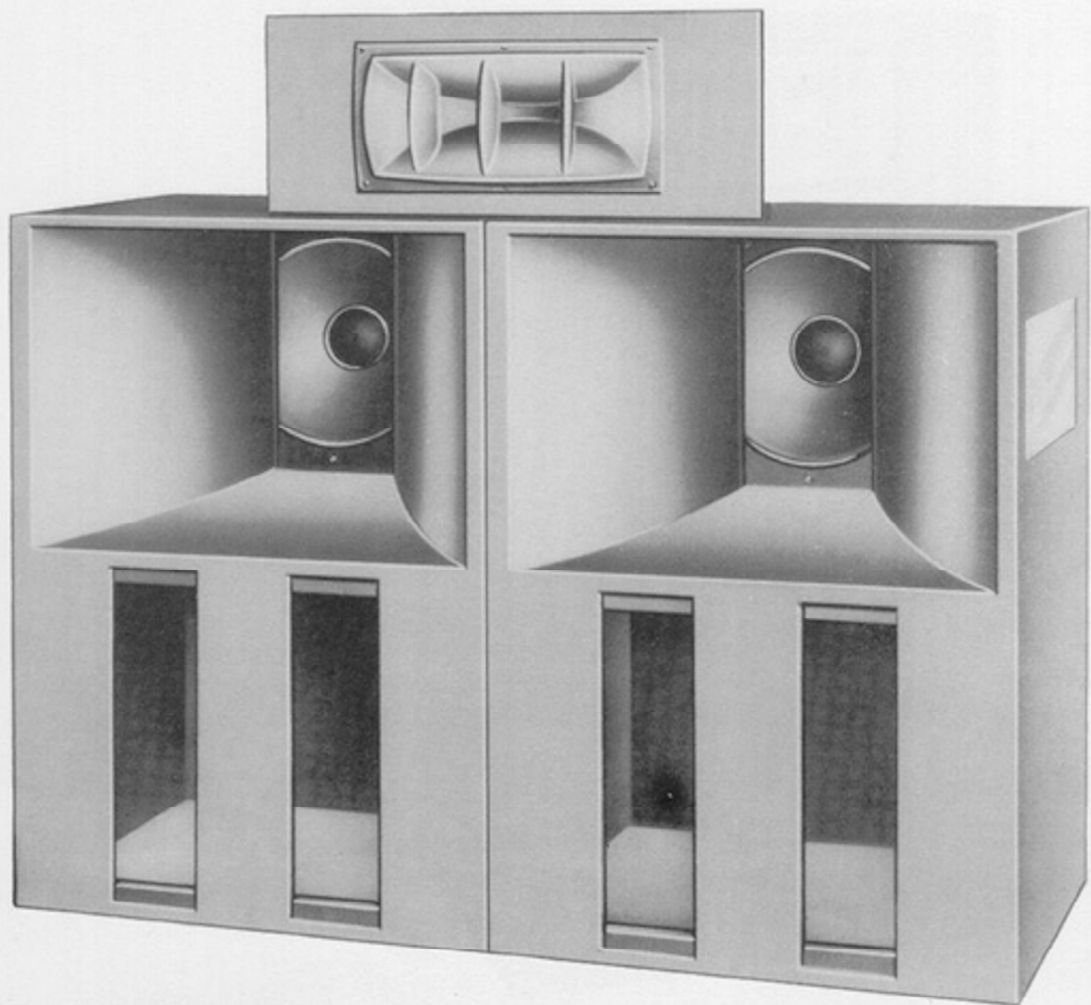
*Loew's Theatre, Hollywood, Calif.*



*Lakewood Center Theatre, Lakewood, Calif.*



# The A-6 Voice of the Theatre



Stacked

This new Voice of the Theatre system with its two low frequency horns will provide "big house" Voice of the Theatre sound in both regular and stereophonic productions at an amazing economical price for theatres up to

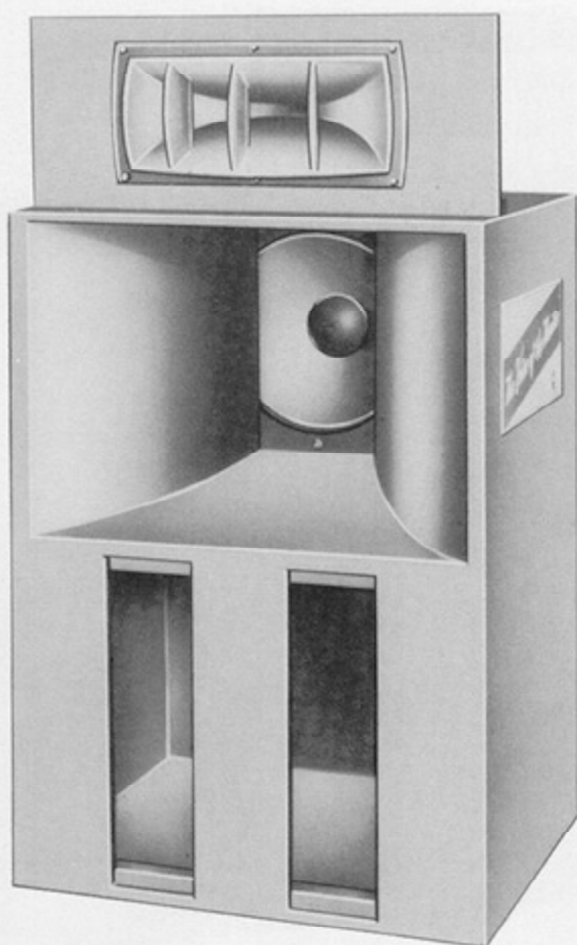
1000 seats. Its shallow depth and adaptability for either side-by-side or stacked low frequency speakers provides a valuable added convenience for easy installation in the most difficult situations.

## SPECIFICATIONS

NO. OF LOW FREQUENCY SPEAKERS	NO. OF HIGH FREQUENCY SPEAKERS	REQUIRED AMPLIFIER OUTPUT IMPEDANCE	HIGH FREQUENCY HORNS			OVERALL DIMENSIONS IN INCHES			APPROX. SHIPPING WEIGHT COMPLETE (LBS.)
			CODE NO.	ANGLE OF HORIZONTAL DISTRIBUTION	ANGLE OF VERTICAL DISTRIBUTION	HEIGHT	WIDTH	DEPTH	
2	1	6-12 ohms	811A	90°	40°	54" * 96"	60" * 30"	24" * 24"	300

\* Stacked

# The A-7 Voice of the Theatre



This newly designed Voice of the Theatre system has been especially engineered to provide economical high quality stereophonic sound for theatres up to 800 seats. The quality is the same as the famous Voice of the Theatre systems

used in first-run houses all over the world. Its compact size will prove an additional advantage in constricted backstage areas. Its shipping weight of only 180 pounds means even lower investment due to the low shipping costs.

## SPECIFICATIONS

NO. OF LOW FREQUENCY SPEAKERS	NO. OF HIGH FREQUENCY SPEAKERS	REQUIRED AMPLIFIER OUTPUT IMPEDANCE	HIGH FREQUENCY HORNS			OVERALL DIMENSIONS IN INCHES			APPROX. SHIPPING WEIGHT COMPLETE (LBS.)
			CODE NO.	ANGLE OF HORIZONTAL DISTRIBUTION	ANGLE OF VERTICAL DISTRIBUTION	HEIGHT	WIDTH	DEPTH	
1	1	6-12 ohms	811A	90°	40°	54"	30"	24"	180



AL-1135 supplement

9356 SANTA MONICA BLVD., BEVERLY HILLS, CALIF. • 161 SIXTH AVENUE, NEW YORK 13, N.Y.